



Where Students Reach Success

THE VOCATIONAL PREPARATORY INSTRUCTION LAB (VPI)

Palm Beach State College
Lake Worth



PSAV (Post Secondary Adult Vocational) students are awarded vocational certificates in areas such as:

Cosmetology

Dental Assisting

Diesel Technology

Heavy Equipment Mechanic

Machining Technology

Medical Assisting

Practical Nursing

Automotive Technology

EMT/Firefighter/Paramedic

Facilities Maintenance

HVAC/R

Massage Therapy

Security & Automation Systems

Surgical Technology

Welding

*Refer to the college catalog for information about other PSAV programs.

PSAV programs (non-college credit occupational training) are designed for students seeking job training for employment in a specific business or industry that requires well-developed technical skills. To complete a program, students must demonstrate mastery of basic skills in **reading**, **math**, and **language**, as well as specific job-related performances. Our **strategies** for program success class can help you accomplish your goals.



Testing



- Post Secondary Adult Vocational (PSAV) students are required to take the TABE – Test of Adult Basic Education. The TABE measures proficiency in basic reading, math, and language. TABE is given at all Palm Beach State College locations. Contact the Testing Center for information:

www.palmbeachstate.edu/testing.xml

- Other specific tests may be required by a PSAV program. This information is found in the college catalog or on the web page for each PSAV program.

- Any student with a documented disability is encouraged to contact the Disability Support Services Office at:

www.palmbeachstate.edu/studentservices.xml

to discuss testing needs and other services **before** taking any standardized test.

The Lake Worth VPI Lab provides **short TABE** remediation classes in reading, math, and language for PSAV students who need remediation after taking the TABE. These classes cover many of the same skills needed to pass the **TEAS** and **NSFI (I-O Solutions Test)**. Only students who complete a TABE remediation course can retake the TABE before 30 days.

- ✿ Some classes meet for only **9 to 15 days** (Monday through Thursday).
- ✿ Other classes meet Monday/Wednesday/Friday for about **one month**.

The classes are: VPI 0100 Reading
VPI 0200 Math
VPI 0300 Language
VPI 0400 Strategies

Students take TABE classes in the areas in which they need improvement. Some students need only one class; others need all classes. Students only retake the section(s) of the TABE that need remediation. Strategies seminar helps every student

All students are required to meet with a PSAV advisor to discuss his or her TABE scores before registering for any TABE remediation class.

**For Palm Beach State - Lake Worth advising,
call Mikayel Ishmael at 561-868-3557**



- ✿ Class size can range from only 1 student to as many as 15 students.
- ✿ Students receive direct instruction from a learning specialist in a classroom setting.
- ✿ The class atmosphere is informal.
- ✿ Lab assignments are required as part of each class. Some assignments can be completed online at home.
- ✿ Classes are short and are held on a rotating basis throughout the semester – days and times for classes vary. Register after obtaining a schedule from the VPI Lab or www.palmbeachstate.edu/documents/SLC/VPICLASSSCHEDULE.pdf



Fees and Registration

- Each TABE remediation class is \$30.00
- A workbook is required for each class - \$20.00 (approx.) The workbook is sold at the Palm Beach State College bookstore.

Students taking a TABE remediation class receive:

- Teacher instruction
- Individual attention
- Extra tutoring at convenient hours
- Use of the lab and ALL resources
- Web-based activities that can be done **AT HOME!**
- THE BEST CHANCE AT PASSING THE EXAM!**



Before you register, you must complete these two steps:

1. Take the TABE at any Palm Beach State College Testing Center location.
2. Meet with an academic advisor or PSAV program manager to discuss your scores and the demands of the program. At Palm Beach State College – Lake Worth, call **Mikayel Ishmael** at 561-868-3557.

VPI Registration Procedure:

1. You MUST see a PSAV Advisor before registering.
2. Take your scores to the VPI Lab. Get a VPI Course Registration Form and the current schedule of classes. Choose a class that suits your schedule.
3. Register and pay for the class at the Palm Beach State College Cashier's Office or you can register and pay online.
4. Take your paid receipt to the VPI Lab before the 1st day of class.
5. Buy the workbook at the Palm Beach State College bookstore. Find the book for: **VPI 0100 Reading** or **VPI 0200 Math** or **VPI 0300 Language**

Obtain a PANTHERCARD (Student I.D.) at the bookstore.

It is required when entering the VPI Lab.



Students can use the computers and resources in the VPI Lab at convenient hours for the entire semester during which they are enrolled in a TABE class.

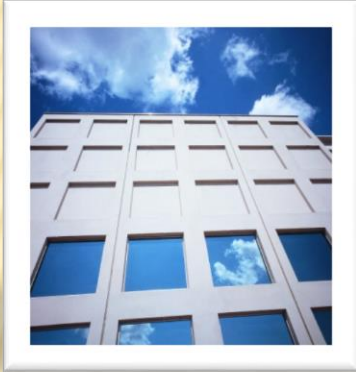
Fall/Spring: 8 a.m. – 8 p.m. Mon. through Thurs.

8 a.m. – 7 p.m. Fridays

10 a.m. – 3 p.m. **SATURDAYS!**

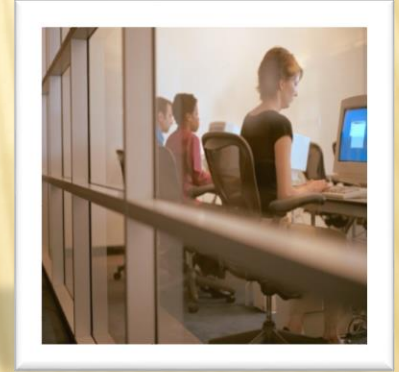
Summer: 8 a.m. – 8 p.m. Mon. through Thurs.

8 a.m. – 12 Noon



The Lake Worth VPI Lab is located in the
Education and Training Center
Lake Worth Rd. and Congress Ave.

ETA Building, Room 235 (2nd Fl.)
Phone: **561-868-3795**



Call the Lake Worth VPI Lab for a schedule of classes or go to the
Lake Worth VPI Lab web page.

TABE remediation is also available at the SLC Labs on the Palm
Beach State Boca Raton and Belle Glade campuses. Please call
them directly about services at those locations.



This concludes the presentation. If you need more information, call the VPI Lab at 561-868-3795.

Thank you for visiting the VPI web page!